

Symmetry Solid Seat Standing and Positioning System

Multiple Configurations To Handle All Of Your Standing Program Needs

Symmetry Adult Clients from 5' thru 6' 5"



Support when you need it:

Fully adjustable, modular systems allow you to add the support you need as you need it.



Positioning Capable:

Lateral Supports, Hip Guides, Support Vest, Headrests, Independently Adjustable Knees, Custom Chest Pads, Custom Tray Surfaces, Custom Seat or Back Pads, all available to maximize your standing and

Symmetry Youth Clients from 3' 6" thru 5' 6"



Over-Center Seat Technology



Standing Correctly:

Symmetry creates the correct alignment of the body for proper standing and weight bearing. The ability to become upright and achieve mild hyper-extension at the hips creates full weight bearing capability. Correct alignment of the pelvis and hips is unequalled in this premier standing device with its Over-Center Seat Technology. Not only does **Symmetry** bring you to a fully upright and weight bearing position, it allows you to adjust that position for maximum stretch and a progressive standing program.

SHEAR REDUCTION SYSTEM

Sliding-Seat:

The advanced positioning capabilities supplied by **Symmetry Sliding-Seat** technology reduce the effect of shear as the body moves from sitting to standing. Our innovative **Sliding-Seat** assists in maintaining the position of the body while minimizing unwanted pressures and shear on the seated areas, allowing you to stay in position.

Adjustable-Sliding-Back:

Our **Adjustable-Sliding-Back** virtually eliminates the effects of shear and body movement when going from sitting to standing. Each back assembly is adjustable so it will move with the client, matching the needs of each individual. This *State-Of-The-Art* Design allows you to personalize the unit and keep all support surfaces in a proper and consistent position not only while standing and sitting, but also while raising and lowering. Once the support devices are in place, they stay where they belong, giving you the best control of your standing and positioning needs.

Postural Alignment:

Symmetry's ability for the back and seat to maintain proper alignment while standing is unequalled. The design of the support system maintains the back in a full-contact supportive position, both while seated and, most importantly, while standing. **Symmetry** is designed to be the best solid seat standing and positioning frame available with the focus on fit, form and function.

Shear Reality

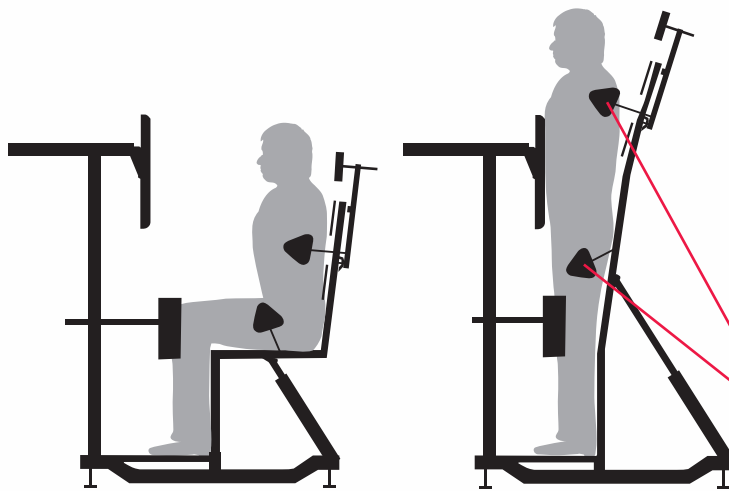
“Standing With You” isn’t just a slogan. It was our goal when we created the **First Sliding-Seat** and **Adjustable-Sliding-Back** to reduce or eliminate shear in a solid seat standing system. Shear occurs while moving from one position to another as in sitting to standing.



Standing in ***Symmetry*** means that needed support surfaces move with you, working as a positional device as well as a standing system. Lateral Supports, Hip Guides, Headrests and other supports stay with you, eliminating the effect of shear and the problems that it creates.

It’s Time YOU stood in ***Symmetry!***

Shear was a Problem. ***Symmetry*** is the Solution!



Other Solid Seat Standers

Historic Effects of Shear in Standing

History has shown that Shear and its effects are dangerous components that must be considered whenever you have a situation where the body moves from one position to another, as in from sitting to standing. Shear creates problems that occur as the body extends from sitting to standing causing needed supports to move and lose their ability to hold and position the client. Constant adjustments to supports are necessary when units without proper technologies are used. Specific positioning will NOT work when you use a unit without the technology to control and maintain the position of the support equipment.

The figures show that when using a typical solid seat stander, the body moves. As the body moves shear occurs, contact surface decreases and areas of pressure increase. Supports that were placed in an appropriate area move and no longer provide support.

Symmetry Standing System Features:

SHEAR REDUCTION SYSTEM: Our **Adjustable-Sliding-Back** and **Sliding-Seat** configurations reduce shear as your body moves from sitting to standing. Our **Sliding-Seat** and **Adjustable-Sliding-Back** supply the ability to maintain the position of the body and the items needed for support. The advanced design and positioning capabilities of ***Symmetry*** reduce the effect of shear on the body, maintaining proper position.

UPGRADEABLE MODULAR FRAME DESIGN: ***Symmetry*** allows you to configure the system the way you need it. Interchangeable back assemblies switch the configuration from a standard unit to a full support system, quickly and easily when necessary. Changes in client size, ability, positional or medical condition can be accommodated as needed with simple tool free adjustment.

MILD HIP EXTENSION, CONTRACTURE CONTROL: ***Symmetry***, like all Prime Engineering products, supplies the best standing and positioning possible. All of our innovative design features allow proper adjustment to facilitate mild hyper-extension at the hips for maximum weight bearing and comfortable contracture control, supplying the optimum standing benefit to the client.

FULLY ADJUSTABLE: Maximum adjustability allows for personalized fit to support all your standing program needs.

ALL STEEL FRAME CONSTRUCTION: Supplies maximum durability and stable support while in use.

LIFETIME FRAME WARRANTY: Lifetime frame warranty to the original purchaser.

Standard Features:

All ***Symmetry*** Standing Systems come complete with the following: **Sliding-Seat**; base frame; 3" locking plastic casters; height and depth adjustable chest pad; flip-up armrests; height and angle adjustable foot positioners; adjustable height tabletop; and depth adjustable knee pad.

Optional Features:

Lateral chest supports; hip guides; padded chest belt; lap belt; various **Adjustable-Sliding-Back** assembly's; multi-adjustable knee system; Roho knee pads; calf straps; custom trays; tray edging; foot straps; steel caster upgrade; tray overlays; tray easel; custom design and manufacturing abilities.

Custom Needs:

Symmetry has been designed with the flexibility to meet most client's needs within its standard features and options. If you have special needs, questions, or any other item that we may assist you with, our engineering department and standing and positioning specialists will be happy to answer your questions or assist you with the design and fabrication of a unit to meet your specific needs.

Adult Specifications:

Base Size: 24" wide X 36" long.

Client Weight:

Standard weight capacity 275 lbs.

Client Height:

5' - 6' 5"

Custom heights avail. - Call for quote.

Std Tray Size: 24" wide X 18" deep.

Youth Specifications:

Base Size: 24" wide X 30.5" long.

Client Weight:

Standard weight capacity 200 lbs.

Client Height:

3' 6" - 5' 6"

Custom heights avail. - Call for quote.

Std Tray Size: 24" wide X 18" deep.

Other Prime Engineering Products



Granstand III Modular Standing System



**Superstand / Superstand Youth
Pediatric Multi-Position Stander**



**CindyLift
Patient Lift / Transfer Device**



4202 W. Sierra Madre Ave., Fresno, CA 93722

800-827-8263 • Fax: 800-800-3355

559-276-0991 • Fax: 559-276-3544

www.primeengineering.com • Info@primeengineering.com